

# DC110



## ASSA ABLOY DC110

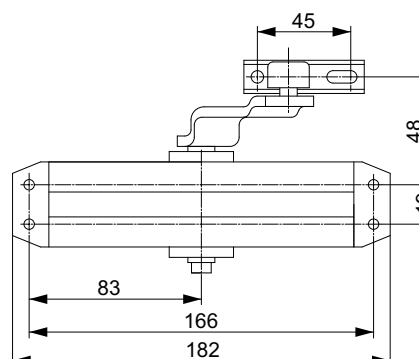
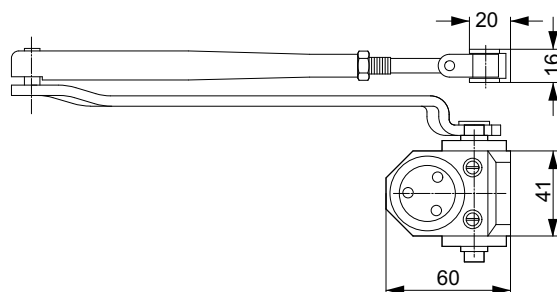
- Rack and pinion door closer with link arm
- Certified in compliance with EN 1154, size 3
- For single action doors up to 950 mm

## Characteristics DC110

- Can be used for left and right-handed doors
- Suitable for fire and smoke protection doors
- Closing and latching speed adjustable via regulating valves
- Thermodynamic valves for consistent performance
- Standard colours: silver EV1; white, similar to RAL9016; black, similar to RAL9005



CE	ASSA ABLOY AUBE ANJOU 10 avenue de L'Europe Parc d'Enterprises du Grand Troyes 10300 Sainte Savine	04
	1121-CPD-AD0054 EN 1154:1996+A1:2002	3 8 3 1 1 3
Dangerous substances: None		



Our service for you: here you can see the individual advantages of our door closer models for your respective field of business.

## The advantages at a glance

Customer segment	Advantages
Project planners	- Compact design - Favourably priced, reliable closer model
Builders	- Quick and easy installation - Suitable for left and right handed doors - Easy to adjust
Trade	- Inexpensive closer model for standard doors - All-inclusive package with door closer and link arm
User	- Largely unaffected by temperature fluctuations thanks to thermodynamic valves

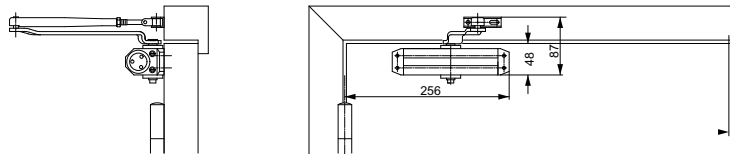
# DC110

## Technical attributes

Technical attributes	
Closing force	EN 3
Door width up to	950 mm
Fire and smoke protection	yes
Door swing directions	Left / right handed
Closing speed	Variable between 180°-0°
Latching speed	Variable between 15°-0°
Weight	1,5 kg
Height	41 mm
Depth	60 mm
Length	182 mm
Certified in compliance with	EN 1154
CE marking for building products	yes

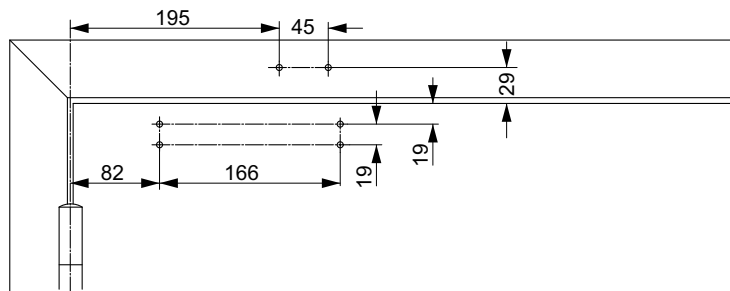
### Required space on doors

Left handed shown in diagram  
Right handed is the reverse



### Installation dimensions

Installation dimensions  
EN3



You can find the complete specification on the internet at: [\(Link of your companies homepage\)](#)

### Specifications for DC110

- ASSA ABLOY Door Closer DC110 featuring rack and pinion technology in compliance with EN 1154
- Closing force EN size 3, for doors up to 950 mm wide
  - Closing speed and latching speed continuously adjustable
  - Suitable for fire and smoke protection doors
  - CE approved
  - Suitable for left and right handed doors

### Colour:

- Silver EV1
- White, similar to RAL9016
- Black, similar to RAL9005

Description	Order no.	Description	Order no.
DC110 EN, size 3, silver EV1		Hold-open link arm L141, white, similar to RAL9016	
DC110 EN size 3, white, similar to RAL9016		Hold-open link arm L141, black, similar to RAL9005	
DC110 EN size 3, black, similar to RAL9005			
Hold-open link arm L141, silver EV1			